

ADVANCED SPEND ANALYSIS (ASA)

WHAT IS IT AND WHY?

The Advanced Spending Analysis (ASA) is to provide a guide for the user(s) of HELP Logistics to adequately and comprehensively capture the expenditure of the partner organization. The tool has been adapted from multiple sources and a combination of experiences. Aid Agencies are increasingly seeking to establish and enhance procurement efficiency throughout their operations. An essential contributing aspect to achieve this, is having a detailed analysis of procurement spending in country programs. This includes how much money is being spent, where, when, on what, and by whom. Furthermore, donors are pressuring aid agencies to have monitoring and oversight of their expenditure, aligned with project implementation.

ANALYSIS AND METHODOLOGY

ESTABLISH THE BASELINE

- Where does your organisation stand in-terms of procurement?
- On What is most of your procurement being expended on?
- Who are the suppliers that are giving you value-for-money?
- When should your Good and Services arrive?

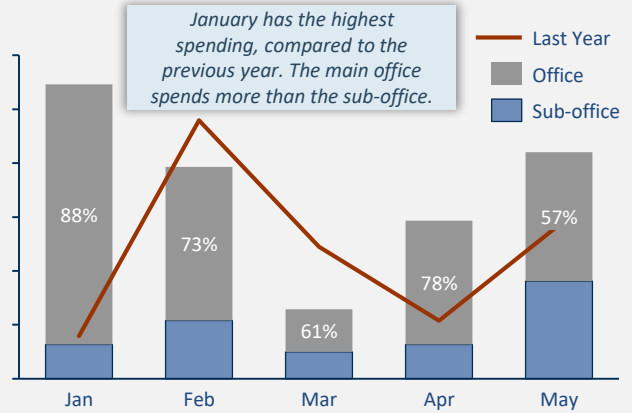
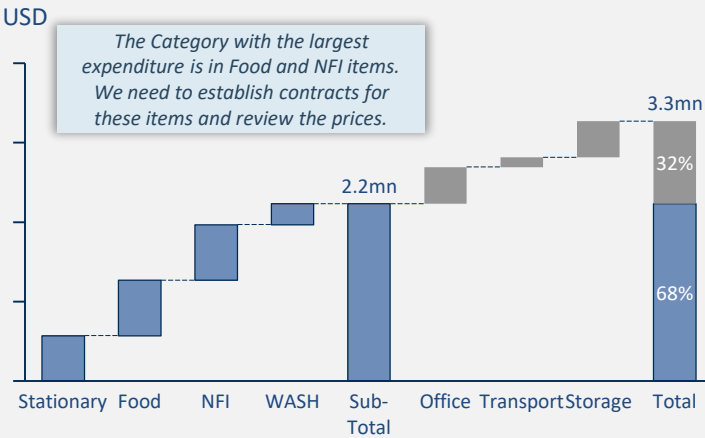
ENGAGE THE STAKEHOLDERS

- Identify the internal procurement processes.
- Reveal external factors that affect procurement practices.
- Validate with Internal stakeholders.
- Reflect what other agencies are doing in the country/region.

REVIEW YOUR MARKET

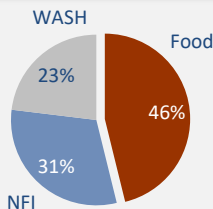
- Establish a framework to capture the market prices.
- Benchmark price comparison throughout strategic markets in your operation.
- Identify suitable locations for potential procurement hubs and contracting.
- Reveal supplier capacities and limitations within your context.

POTENTIAL OUTPUTS



Supplies	Main Office	Field Office 1	Field Office 2
Food	\$68.00	+3.85%	-2.21%
NFI	\$88.00	-1.21%	-4.18%

We identify that Food and NFI items are the most difficult to procure for, due to supplier constraints.



We reveal that prices for NFIs are cheaper at the Main Office than other locations. It is more expensive to purchase Food at Field Office 1, and thus procurement there should be minimized.